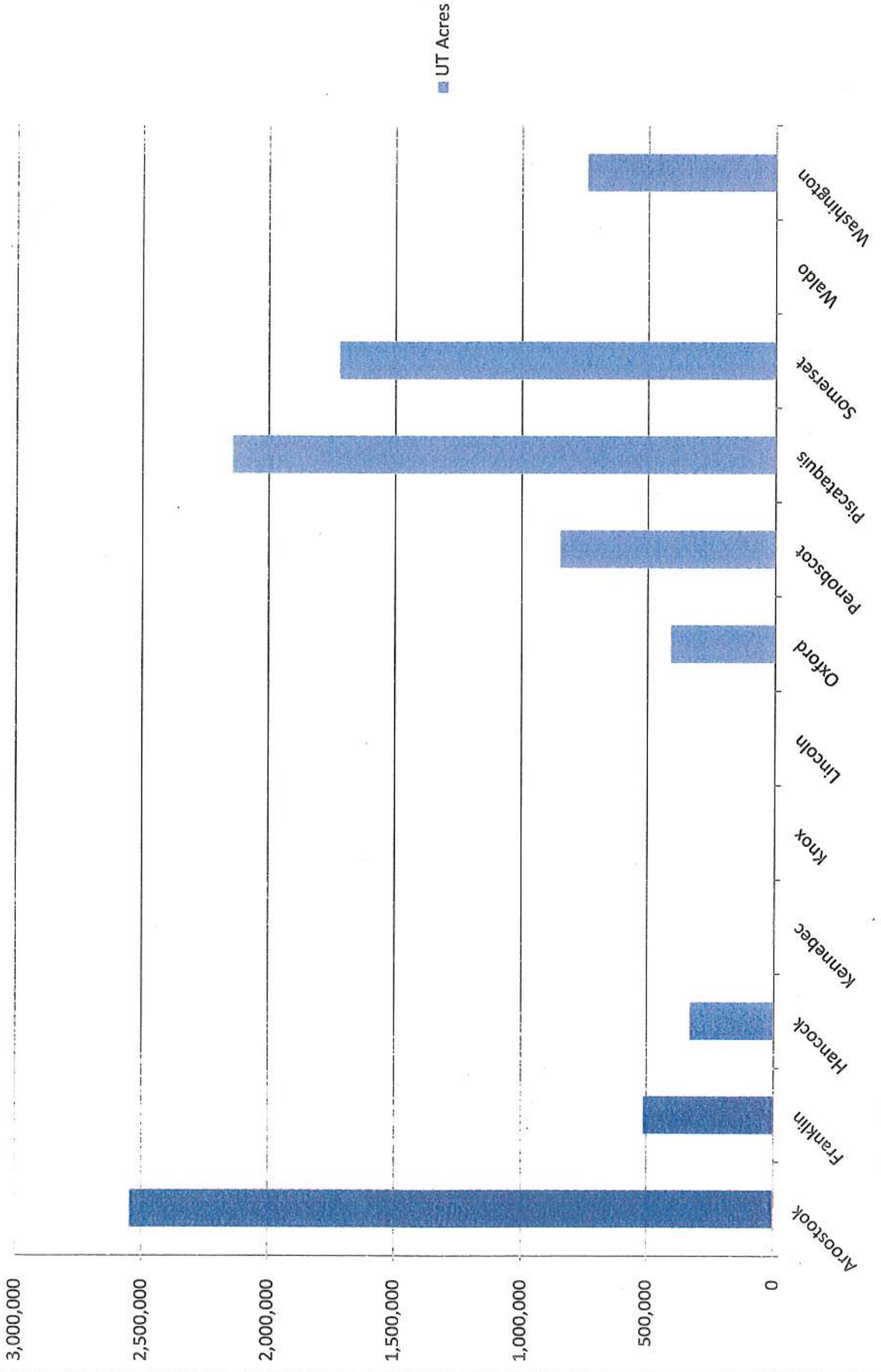


Unorganized Territory Acres by County

Maine Revenue Service 2015 Annual Report



Letter from Gail Fanjoy - 4/23/19

I am writing in support of LD 1561, a bill that would establish policies to guide new commercial, industrial, or residential subdivision development into existing communities.

I am a third generation lifelong resident of Millinocket. I am the CEO of a non-profit agency headquartered in Millinocket which provides supports to people with disabilities in Penobscot and Cumberland Counties; civically, I serve on the Board of Directors of the Katahdin Area Chamber of Commerce as Past President, I am a former Millinocket Town Councilor, and have been involved in economic development activities in various groups and initiatives.

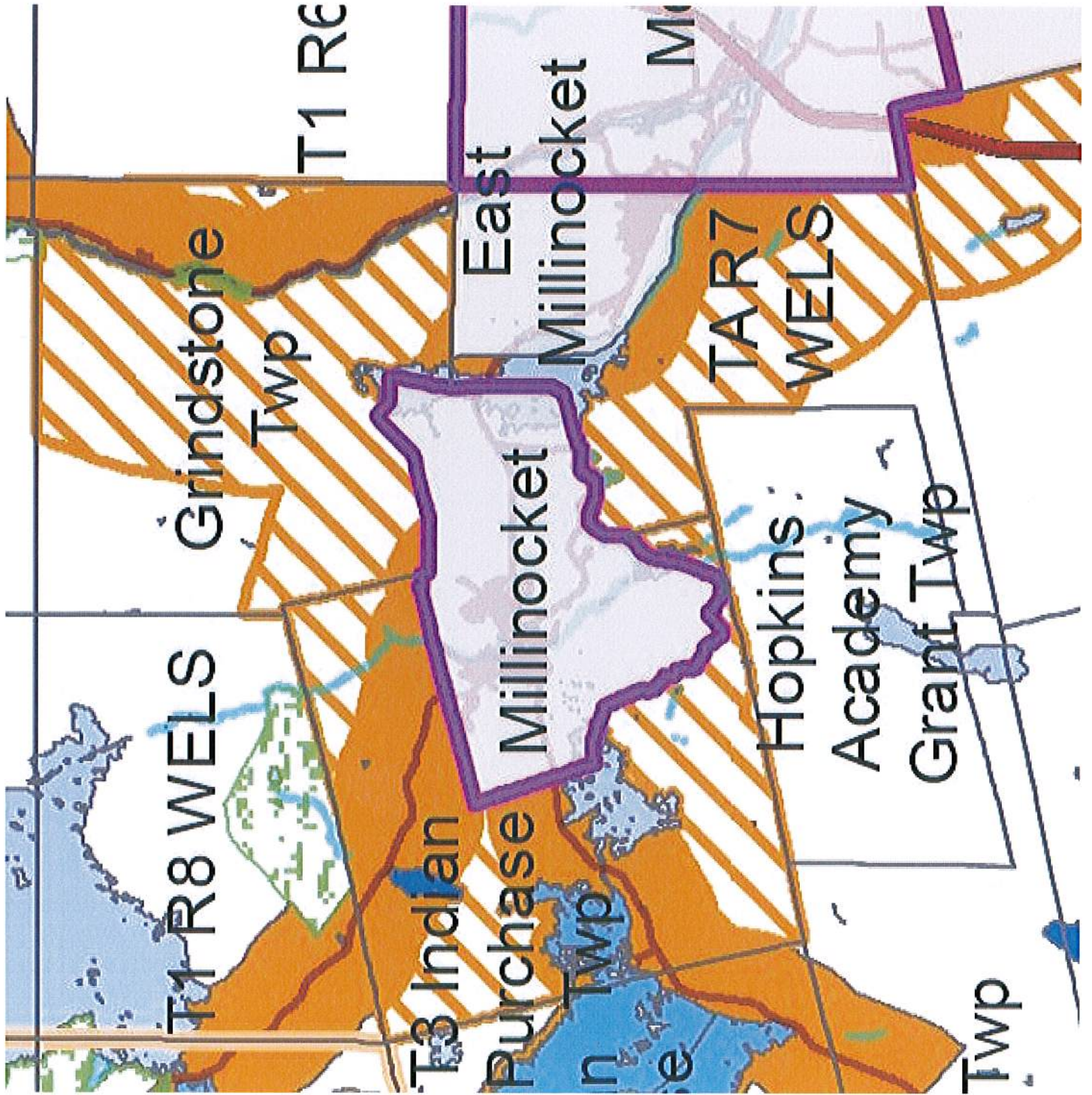
I have voiced my concerns about the LUPC's proposed 1 x 7 adjacency rule in that it does nothing to protect the shrinking tax bases in our communities, does nothing but jeopardizes our scenic and natural assets that must be protected both in terms of community character and sustainable tourism, and strains our communities' emergency response personnel and equipment without adequate reimbursement.

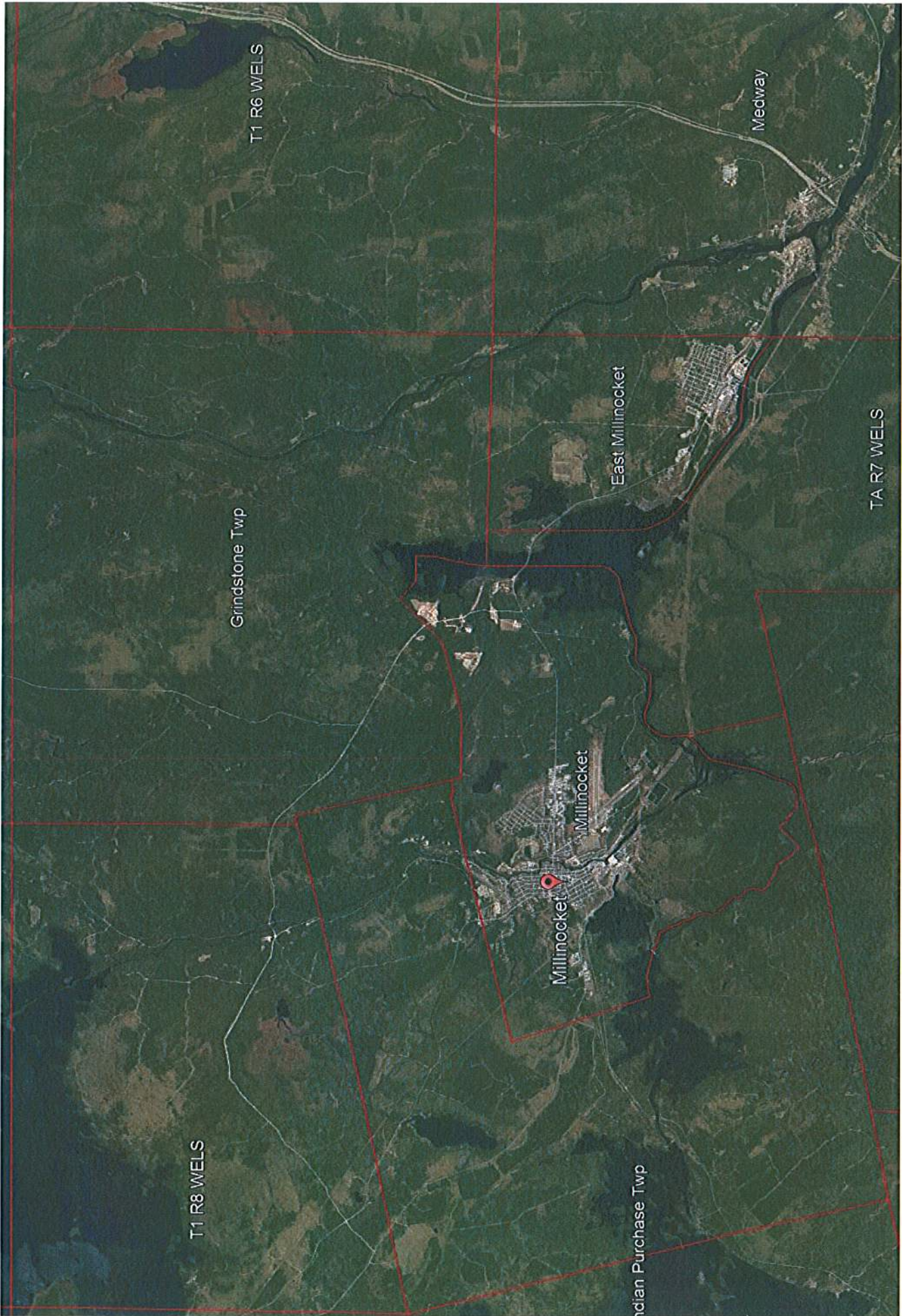
LD 1561 directs the LUPC to engage in regional land use planning and zoning upon the request of one or more towns bordering LUPC's jurisdiction and requires them to maintain the existing adjacency principle.

Regional planning that guides responsible new development into existing towns makes economic sense:

- The Katahdin region and its citizens can benefit from tax revenues when new development is placed within the border of existing towns.
- The cost of providing public services such as police, school bus transportation, fire, and emergency services is less than the cost of servicing sprawling development. The Katahdin region is already burdened by providing these services in surrounding unorganized territory.
- Katahdin region communities are desperate for more jobs, more population, more children in our schools, more homes occupied, more infrastructure used.
- Protecting the North Woods from fragmentation is critical for maintaining wildlife habitat and for recreational tourism businesses that depend upon its remote wilderness character.

There are already many volunteer groups, businesses, organizations, and municipalities working in collaboration to create a unifying regional vision and an action plan that translates the regional vision into local, actionable items. The LUPC needs to be part of this collaborative conversation and planning. The passage of LD 1561 is an important first step.





T1 R6 WELS

Medway

East Millinocket

TA R7 WELS

Grindstone Twp

Millinocket

T1 R8 WELS

Indian Purchase Twp