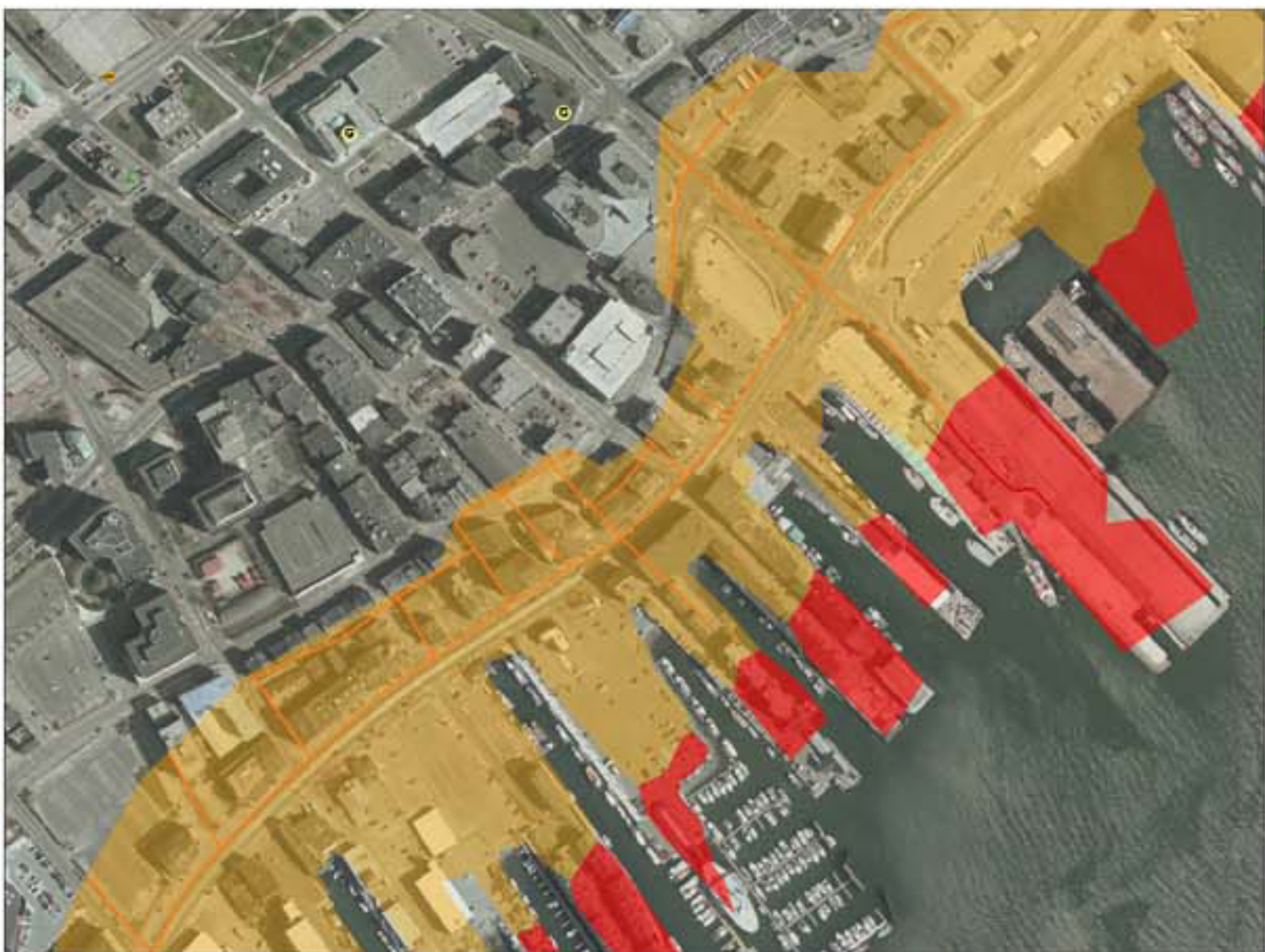
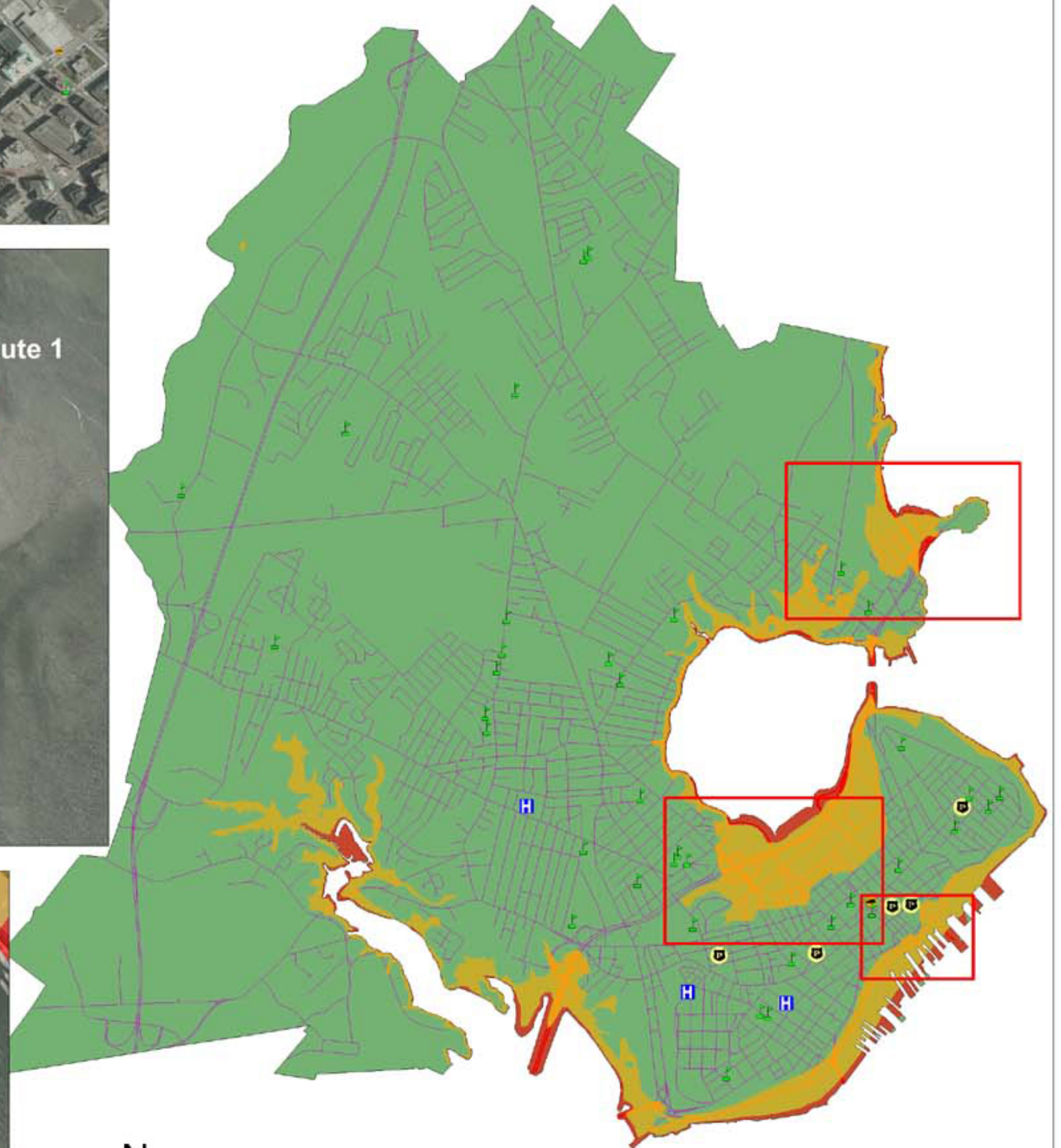


# Impact of Sea Level Rise on Portland, Maine



<span style="display:inline-block; width:15px; height:15px; background-color:yellow; border:1px solid black;"></span> Elevation < 6m	<span style="display:inline-block; width:15px; height:15px; background-color:lightgreen; border:1px solid black;"></span> Schools and Libraries
<span style="display:inline-block; width:15px; height:15px; background-color:red; border:1px solid black;"></span> Elevation < 1m	<span style="display:inline-block; width:15px; height:15px; background-color:yellow; border:1px solid black;"></span> Police Stations
<span style="display:inline-block; width:15px; height:15px; background-color:orange; border:1px solid black;"></span> Roads: Elevation < 6m	<span style="display:inline-block; width:15px; height:15px; background-color:blue; border:1px solid black;"></span> Hospitals
<span style="display:inline-block; width:15px; height:15px; background-color:red; border:1px solid black;"></span> Roads: Elevation < 1m	<span style="display:inline-block; width:15px; height:15px; background-color:yellow; border:1px solid black;"></span> Fire Stations
<span style="display:inline-block; width:15px; height:15px; background-color:purple; border:1px solid black;"></span> Roads	



0 1 2 4 KM

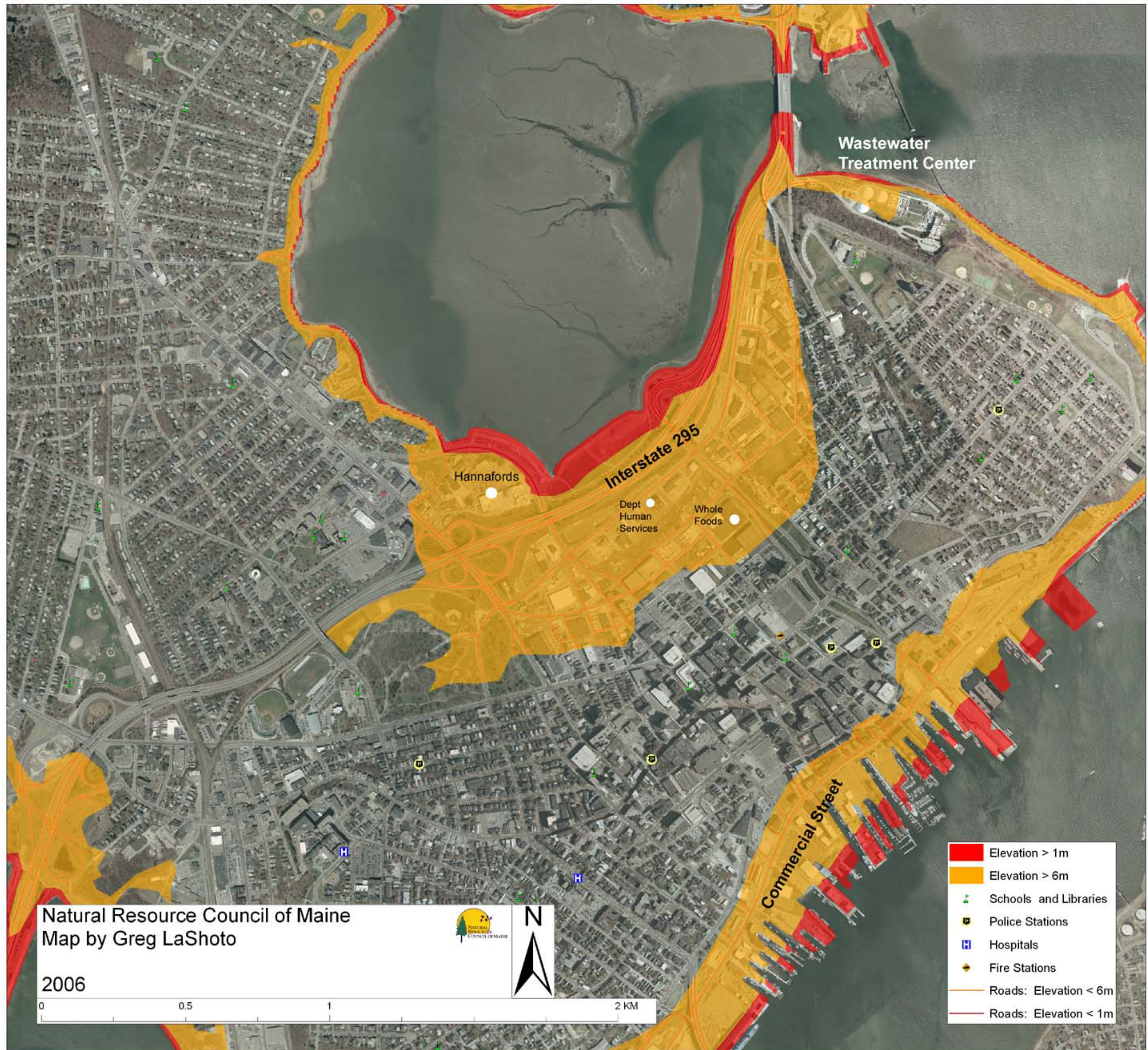


Natural Resource Council of Maine  
Map by Greg LaShoto

2006



# Impact of Sea Level Rise on Portland, ME





# Impacts of Sea Level Rise on Bath, Maine



Natural Resource Council of Maine  
Map by Greg LaSalle

# Impact of Sea Level Rise on Kennebunk and Kennebunkport, Maine

