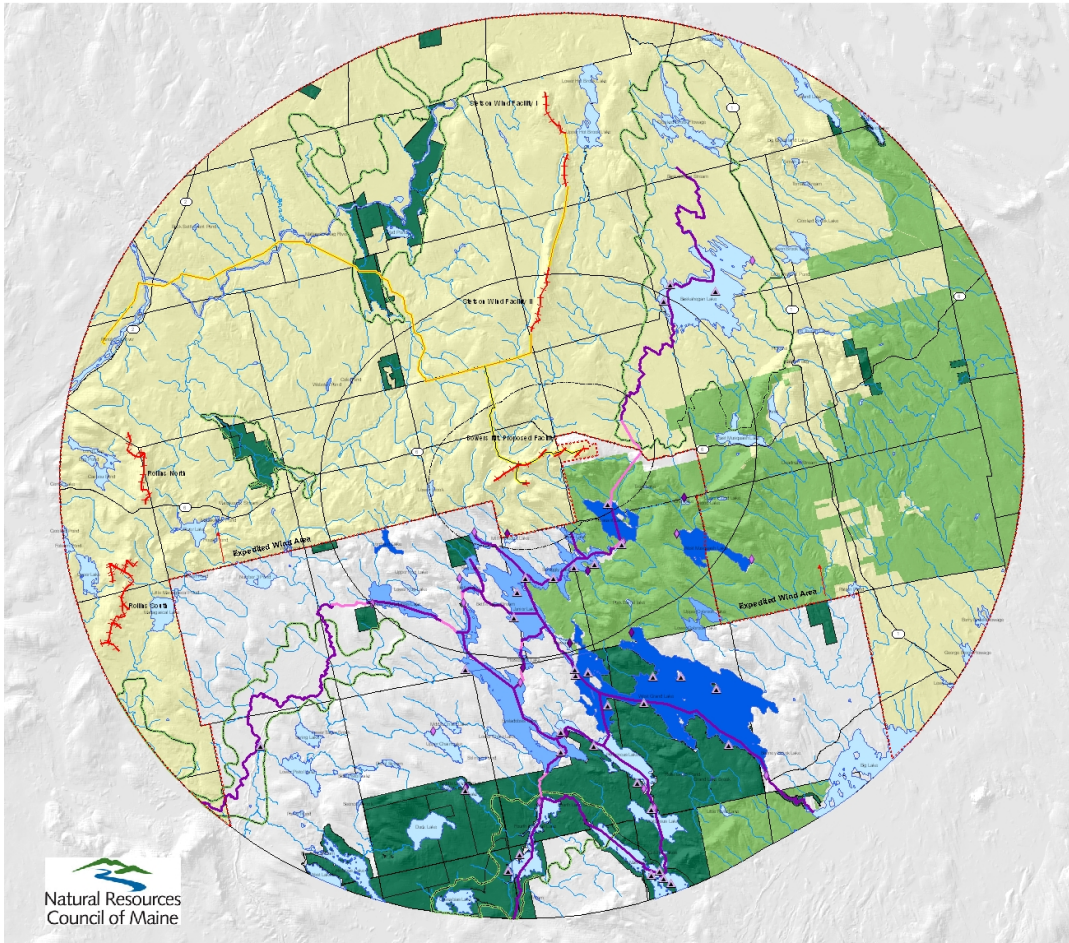


Conservation Lands and Key Recreation and Scenic Resources within 20 miles of Bowers Wind Project



- | | |
|---|----------------------------------|
| Map Features | Wind Facilities |
| ○ 3 Mile Radius | +++ Rollins Wind Facility |
| ○ 8 Mile Radius | +++ Stetson Wind Facility |
| — State Highway | +++ Bowers Mt. Proposed Facility |
| ▲ Campsites | --- Expedited Wind Zone Border |
| ◆ Hand Carry Boat Launch | Transmission Lines |
| ◇ Trailer Boat Launch | — Existing |
| | — Proposed |
| Lake Classification | Canoe Routes |
| ■ Outstanding Scenic Resource within 8 miles | — Portages |
| ■ Significant Scenic Resource within 8 miles | — Water Routes |
| ■ All Other Water Bodies | |
| Land Type | |
| ■ Fee Conservation Lands: State and NGO Land | |
| ■ Conservation Easements: Publicly and NGO Held | |
| ■ Beginning with Habitat Focus Areas | |

