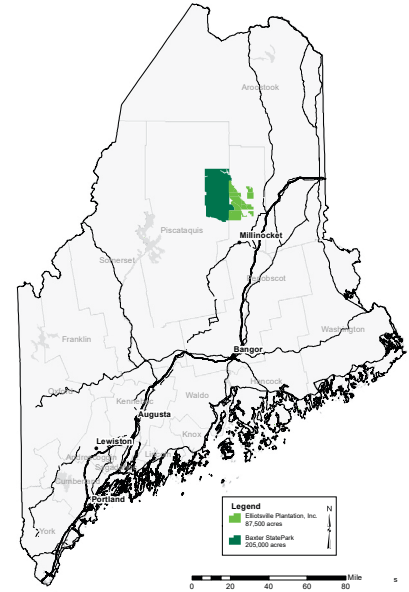


A New National Park & National Recreation Area East of Katahdin



NRCM is working with residents of the Katahdin region and across Maine to build support for a new National Park and National Recreation Area east of Baxter State Park. Elliottsville Plantation, Inc. (EPI) has offered to donate its land, currently 87,500 acres, within a 150,000-acre boundary for the purpose of creating a National Park and National Recreation Area. EPI also proposes to raise an endowment to support park operations.



PHOTO BY BILL DUFFY



PHOTO BY JON LUOMA

The Maine Way of Life

The National Park would be available for hiking, paddling, wildlife watching, bicycling, cross-country skiing, and other non-motorized activities typically found in national parks. The National Recreation Area would be available for all of the same activities, plus hunting and snowmobiling. The National Park and National Recreation Area would help revitalize the economy of nearby towns while permanently conserving a portion of Maine's iconic forests, safeguarding more than 30 miles of waterways, and protecting habitat for many animals.

Conservation Values

The land contains important plant and wildlife habitat, including wetlands, unusual plants, and natural communities. It provides habitat for iconic animals such as moose and black bear as well as rare species such as lynx and pine marten. Common Loons, Bald Eagles, and a variety of northern songbirds are easily seen throughout the area.



PHOTO BY JON LUOMA

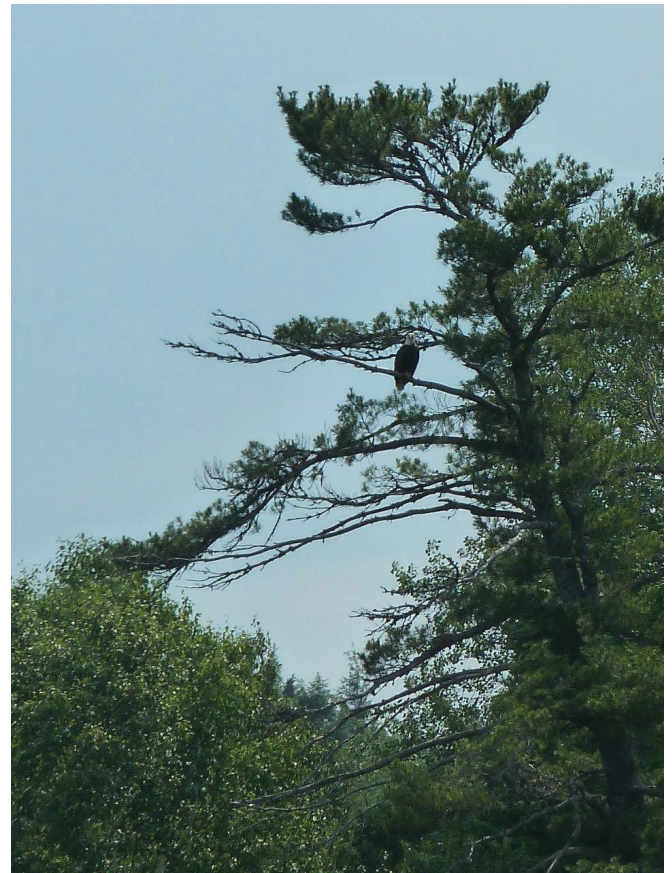


PHOTO BY JON LUOMA

More than 30 miles of rivers and streams pass through the land, including the East Branch of the Penobscot River, with four outstanding rapids and falls; the lower reaches of Wassataquoik Stream, which flows out of Baxter State Park; the lower reaches of the Sebois River; and several beautiful ponds. The land is also connected to other public and private conservation lands including Baxter State Park, the Appalachian Trail, the Allagash Wilderness Waterway, and to lands protected from development by conservation easements to the south and west of Baxter State Park.

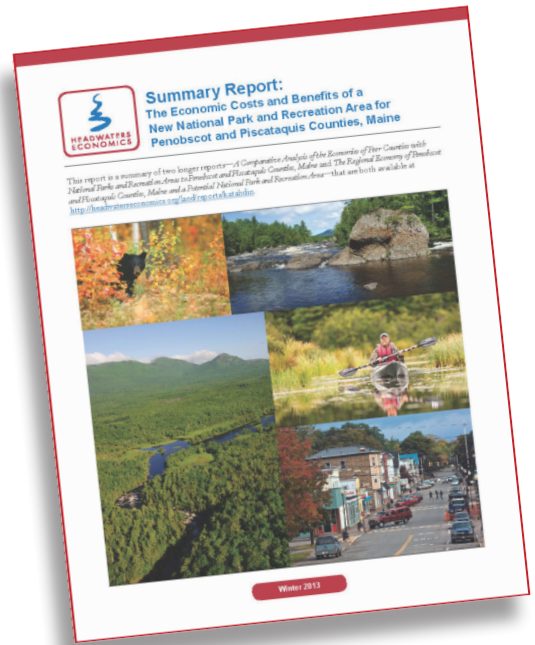
Why a National Park?

National parks are considered the gold standard for combining sustainable economic development and the protection of beautiful natural areas that enrich our lives. Many people visit an area simply because there is a national park in the region. EPI's land includes spectacular views of Katahdin, uncommon ecological features, two of Maine's most pristine rivers, prime wildlife habitat for iconic and rare species, and extensive Native American North Woods history. These qualities make the land a prime candidate for this distinguished designation.



Boosting the Economy

A February 2013 economic study predicted that 450 to 1,000 new jobs could be created in and around a new National Park and National Recreation Area east of Katahdin, assuming 10 – 15 percent of visitors to Acadia also visited the new National Park and Recreation Area in the North Woods, based on the experience of similar communities across the country. These other areas, located near national parks and national recreation areas, have seen a boost in service-related jobs catering to visitors to the area as well as an increase in health care, professional, and technical services positions. Jobs are being created in these areas by entrepreneurs and businesses that choose to locate in beautiful parts of the country with opportunities for outdoor recreation and need only Internet connectivity and access to a major airport like Bangor to run their business. Read the study summary at: <http://www.nrcm.org/documents/NPfinalsummaryreport.pdf>.



An Act of Congress

Establishing a new National Park and National Recreation Area requires an Act of Congress. This in turn will require support from Maine's Congressional delegation. EPI and NRCM continue to build an already broad base of support across Maine for a project that Maine's Congressional delegation should support.

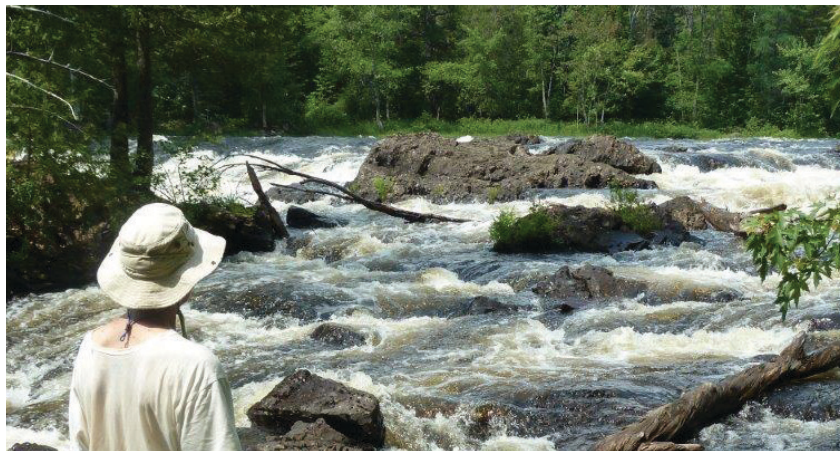


PHOTO BY JON LUOMA

Next Steps

EPI and NRCM are working with individuals and groups in the Katahdin region and around the state to demonstrate broad support for designating these lands as a National Monument as an interim step to the creation of a national park and national recreation area. We hope this will inspire Maine's Congressional delegation to then designate the land as a national park and national recreation area through an Act of Congress. For more information, including how you can help, go to <http://www.nrcm.org/projects-hot-issues/woodswildlife-and-wilderness/a-new-national-park-recreationarea-in-northern-maine/> or contact Eliza Donoghue at eliza@nrcm.org or (207) 430-0118.



PHOTO BY BILL DUFFY

