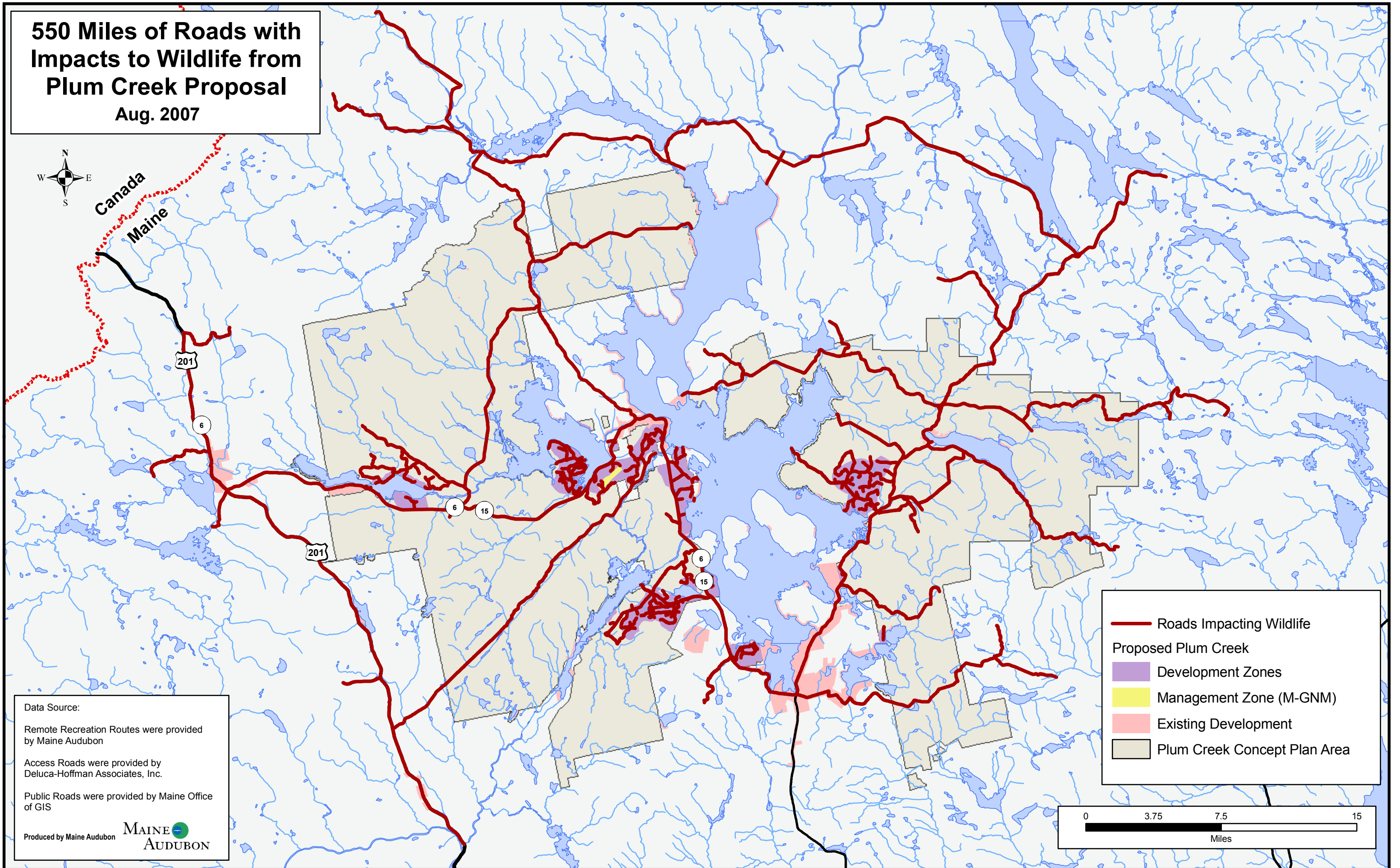


# 550 Miles of Roads with Impacts to Wildlife from Plum Creek Proposal

Aug. 2007



Canada  
Maine



#### Data Source:

Remote Recreation Routes were provided by Maine Audubon

Access Roads were provided by Deluca-Hoffman Associates, Inc.

Public Roads were provided by Maine Office of GIS

Produced by Maine Audubon  
**MAINE AUDUBON**

- Roads Impacting Wildlife
- Proposed Plum Creek
  - Development Zones
  - Management Zone (M-GNM)
  - Existing Development
  - Plum Creek Concept Plan Area

