

# VISUAL SIMULATION FROM LONG POND BOAT LAUNCH, LINCOLN

8/18/08

LandWorks

Rollins Wind Project

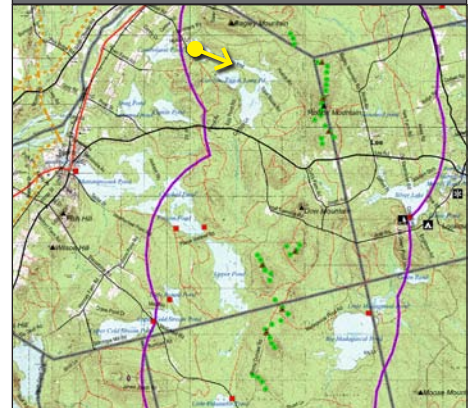
Prepared by LandWorks, Middlebury, VT



Existing Conditions Photograph



View Location Map



**Simulation Information**

<b>Turbine Information</b>	Model: GE 1.5 MW sle 60Hz
	Hub height: 262'-6" (80 m)
	Rotor diameter: 252'-11" (77 m)
<b>Photograph Information</b>	Date and time: 10/2/07; 10:15 am
	Location: From dock at Long Pond public boat launch in Lincoln; 45.4098° N, 68.4350° W
	Camera elevation above sea level: 300'-4" (91.5 m)
	Focal length (35mm equivalent): 56mm
	Simulation viewing distance: 11" (27.9 cm)
<b>Technical Information</b>	Distance to nearest visible turbine: 3.3 miles (5.4 km)
	Software: Nemetschek VectorWorks 2008; Google SketchUp Pro 6; Adobe Photoshop CS3
	Digital elevation data source: <a href="http://www.megis.maine.gov/catalog">http://www.megis.maine.gov/catalog</a>

# VISUAL SIMULATION FROM UPPER POND, LINCOLN

Rollins Wind Project

11/26/08



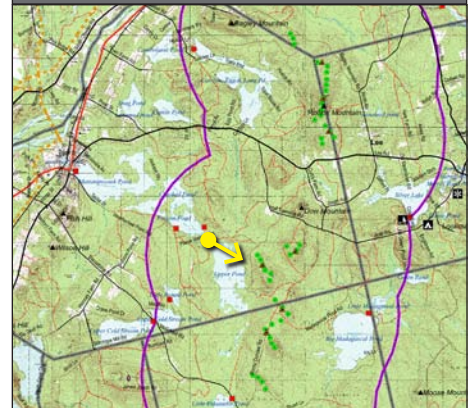
Prepared by LandWorks, Middlebury, VT



Existing Conditions Photograph



View Location Map



## Simulation Information

<b>Turbine Information</b>	Model: GE 1.5 MW sle 60Hz
	Hub height: 262'-6" (80 m)
	Rotor diameter: 252'-11" (77 m)
<b>Photograph Information</b>	Date and time: 11/18/08; 10:00 am
	Location: North end of Upper Pond in Lincoln; 45.335° N, 68.428° W
	Camera elevation above sea level: 282' (86 m)
	Focal length (35mm equivalent): 55mm
	Simulation viewing distance: 11" (27.9 cm)
	Distance to nearest visible turbine: 1.4 miles (2.3 km)
<b>Technical Information</b>	Software: Nemetschek VectorWorks 2008; Google SketchUp Pro 6; Adobe Photoshop CS3
	Digital elevation data source: <a href="http://www.megis.maine.gov/catalog">http://www.megis.maine.gov/catalog</a>

# VISUAL SIMULATION FROM TRANSALPINE ROAD, LINCOLN

8/18/08

LandWorks

Rollins Wind Project

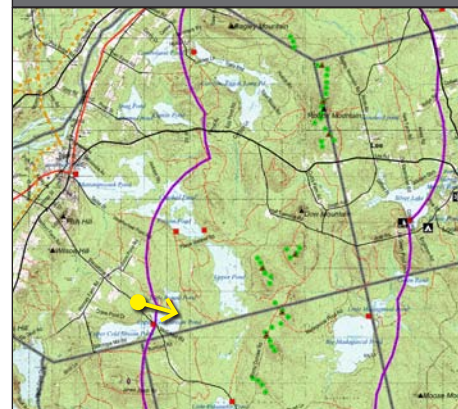
Prepared by LandWorks, Middlebury, VT



Existing Conditions Photograph



View Location Map



## Simulation Information

<b>Turbine Information</b>	Model: GE 1.5 MW sle 60Hz
	Hub height: 262'-6" (80 m)
	Rotor diameter: 252'-11" (77 m)
<b>Photograph Information</b>	Date and time: 7/29/08; 3:15 pm
	Location: Transalpine Road in Lincoln; 45.3109° N, 68.4672° W
	Camera elevation above sea level: 480'-11" (146.6 m)
	Focal length (35mm equivalent): 56mm
	Simulation viewing distance: 11" (27.9 cm)
<b>Technical Information</b>	Distance to nearest visible turbine: 3.5 miles (5.7 km)
	Software: Nemetschek VectorWorks 2008; Google SketchUp Pro 6; Adobe Photoshop CS3
	Digital elevation data source: <a href="http://www.megis.maine.gov/catalog">http://www.megis.maine.gov/catalog</a>